

May 2020

Social Distancing Edition #2



Meet My Lathe



Marc Greene

She's a Robust "Sweet" 16 with a 24" extension. I love the stainless steel bed, since I'm a clean freak. Easy to maintain. If anyone is thinking about getting one, feel free to come take a look. Bring your own wood. I'm still trying to stock up.



Vaughn Graber

My Jet lathe replaces a Craftsman lathe that I purchased in 2004 and used for 5 years. I purchased the Jet in 2009 and wish I would have purchased it first. Very happy with the Jet.



In this issue:

Meet My Lathe
The Call of the Lathe
Spindle Gouges Explained

Page

1, 2 & 3

4

5, 6 & 7

Club Calendar
Home Gallery
Thank You

Page

8

9, 10, 11 & 12

12

Peter's Safety Corner
Favorite Tools
General Club Info.

Page

13

14

15

Meet My Lathe



Tom Boley

The four are the Oneway 2436, original Delta Midi, Stubby S750, and the club's Delta (rear view).



Robert Kloppenborg



Meet My Lathe



Tom Shields
Robust American Beauty



Randy Zelenka
VP36 doing a chunk of
spalted maple



May 2020

The Call of the Lathe



Hello all.

Our Club is now 5 years old and we weren't even there to celebrate it. Don't worry when we finally get back together we will have a celebration. As you all know by now some of the restrictions are beginning to lift. That should be a much needed boost to the economy. There is a several step plan to get things going again. So for now that means we are still unable to meet but I think I can see a little light at the end of the tunnel. Speaking for myself and I think for others, I know it will be a great time when we all can get back together. Even though some of us may lean to the introverted side there is always something about spending time with others that is needed.

Some of you continue to use this time to turn new projects so please send pictures so we can all join in on seeing what you are up too. I have to admit that for me, not a whole lot is different as I'm still working and going about life much the same. Just not as many trips to the restaurants and stores. Although I have been to Menards a couple of times. My wood working project, during this time, is related to building a platform to house my filtration system for my small koi pond.

Here's a question to ponder. What are the first things or places you will do or go to

when the restrictions are lifted? As I thought about that the other day the first item to come into my mind was to get a hair cut. I'm not sure my hair has been this long for the last 30 years. Oh the simple things that we often take for granted. Give the question some thought. You might be surprised what you come up with.

I am constantly bombarded with "stuff" from wood turning supply places. Now is the time to be getting your supplies if you can. Most if them have discounts and free shipping during this time so if you are needing something check out your favorite sites.

Well as before, if for some reason you are in need of any kind of assistance that you think the members could provide, please do not hesitate to contact me and we will see what can be done for our fellow brothers and sisters. Most of all stay safe and don't be in to much of a hurry to be back to normal (whatever that might be). Sometimes a little slower pace isn't all that bad.

"Turn what you Love and Pass on the Love"

Ray Case—President



Spindle Gouges

explained

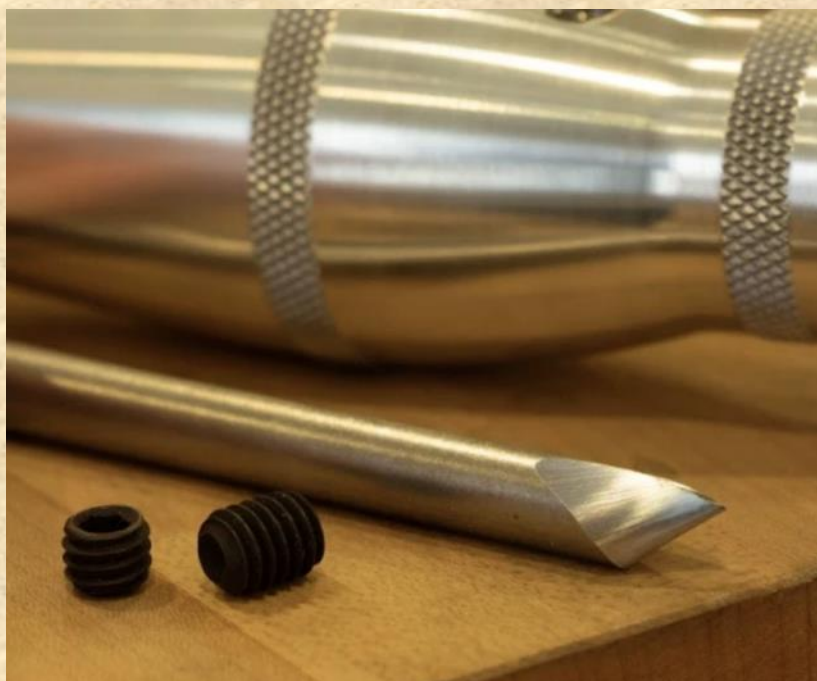
Original Article authors Carter and Son Toolworks
(www.carterandson.com)
used with permission.

3 Common Spindle Gouges Explained

Spindle gouges are incredibly versatile tools. There are several variations of the gouge, each useful in different situations.

Detail Spindle Gouge

A uniquely shallow flute sets apart this style of spindle gouge. A great deal of material remains under the flute, creating a stiff, sturdy little tool. This advantage aids heavy cuts and ensures less chatter when you're hanging over the tool rest to accomplish deeper cuts.



Spindle Gouges

Continued

Original Article authors Carter and Son Toolworks

(www.carterandsontoolworks.com)

used with permission.

The unique flute design also takes to a swept back grind, and the nose tends to have a small radius. For intricate details and tight transitions, these features set the detail gouge apart.

Watch Sam Angelo share [detail spindle gouge techniques here](#) (right click on blue text and choose the Open link selection to start video)



. Fingernail Spindle Gouge

Traditional fingernail spindle gouges have a deeper flute than that of a detail spindle gouge, and a wider flute profile than your standard bowl gouge.

Whether cutting coves, roughing material, or forming beads, the spindle gouge is incredibly versatile, and certainly a tool to beef up your arsenal! A spindle gouge can be ground with varying profiles and tip radii, depending on the type of work you're looking to accomplish. (And as you require a more pointed nose, for v cuts for instance, reaching for your detail spindle gouge is advantageous.)

Spindle Gouges

Continued

Original Article authors Carter and Son Toolworks

(www.carterandsontoolworks.com)

used with permission.

For those new to the spindle gouge, we always suggest a standard fingernail grind with a gently rounded tip profile (as shown above).

For the most part, and particularly for beginner woodturners, spindle gouges are not ideal for bowl turning. They tend to be ground at a steeper, more aggressive angle than a bowl gouge. In addition, the shallower flute forms a different cutting edge profile. These factors can lead to catches.

A detailed video by Sam Angelo on spindle gouges, including their use and sharpening, [can be found here](#) (right click on blue text and choose the Open link selection to start video)



Low Profile Spindle Gouge

Compare a low profile gouge to a traditional spindle gouge, and you'll notice significantly lower wall height. This provides great access and allows for fine details and maneuvers. This style spindle gouge is well-suited for finials, and other delicate projects





Programs

Flint Hills Woodturners Calendar of Events

Upcoming demos:

Tom Boley will give the March demo on making a beautiful unusually shaped vase with the assistance of a vacuum chuck.

I hope that the club is ready for our professional weekend with Matt Monaco from Springfield, MO in April. We still have room for more members to sign up for the workshops on Friday and Sunday.

As al-

ways

please con-

sider volunteering and also if you have ideas for demonstra-

Mar 7th	Monthly Meeting Tom Boley Vac	Go
Mar 16th	YA Skill En- hancement 7:00-9:30pm	 Red Oak Hollow Lathe Works, Wamego
Apr 4th	Monthly Meeting Matt Monaco	Golden Prairie Honey Farms 8859 Green Valley Drive, Suite #4, Manhattan

Until further notice all club functions have been cancelled. Please follow the recommendations from the state and local officials.



Home Gallery Show and Tell

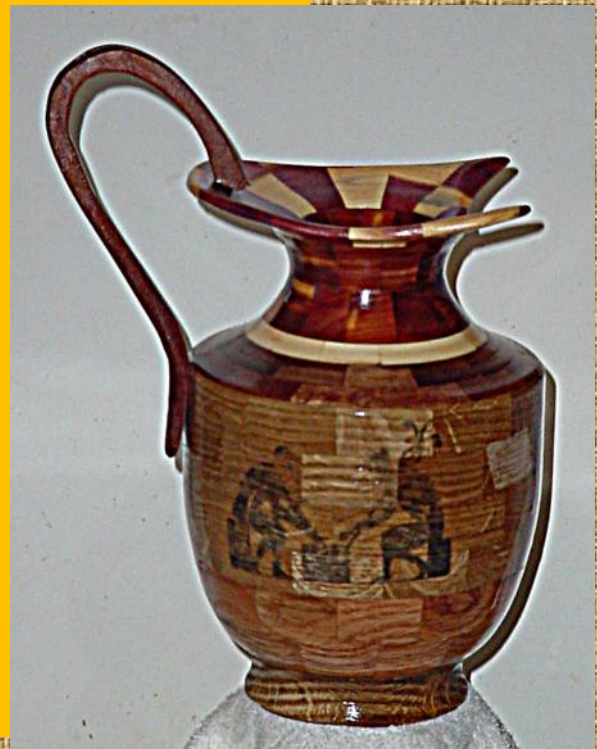


Victor Swartz

This doesn't have a name. I'm sure there is not another like it. The classic-style dome is flam box elder and the body is maple. Base and separating line are sapele. It enshrines our wedding picture from 1952. The front is hinged and held closed by 2 magnets 1/4 x 1/16.



This Greek style pitcher is made of oak and cedar with a redwood handle. It is patterned after ancient Greek pottery. Barely visible is the ink jet transfer picturing two men playing chess. This, too, is a Greek design used on pottery. The spout is an attempt to copy the original style in clay.



Home Gallery Show and Tell



Marc Greene

Some ruff turned Maple. One day will be lamps.



Steve Hougham

My Granddaughter ask me for a yarn bowl so she got one made of cherry and just a small dish with lid from scrap walnut for my wife.



Home Gallery Show and Tell



Vaughn Graber

SW vase 2: The vase is made of Walnut, Maple for the base and center ring, Elm for ring above the center ring and scrap wood for the top. Holes in the center ring were pre drilled after the segments were cut using a 1/8 to 1/2 inch bit with random pattern. The segments were then glued up. The finish on the top is Modern Masters Metal Effects from Craft Supply. I wire burned around the top and masked off the rest of the vase to keep the finish from bleeding over. The other dark lines are wire burns. The rest of the finish is 2 coats of wipe on gel poly.



Domino bowl: This was made similar to the dice bowl I made. The Dominoes are comprised of 32 segments per ring. The white lines are the center of the domino and the blue lines separate the dominoes. The lines are white and blue dyed vainer. The black segments are filler as there are only 28 dominoes in a set of double 6's. The bottom is Cherry, the dominoes are Walnut with Poplar spots.(1/8 in dowels). I cut the segments, drilled the holes, glued the dowels and then glued up the segments into a ring. The rest of the bowl is Maple and Lyptus. The dark rings are wire burned. The black segments separating the dominoes is Wenge. The finish is 2 coats of wipe on gel poly.



Home Gallery Show and Tell



Dennis Biggs

Restocked my Etsy shop, DocsBowls



Community Involvement

Hello Woodturners!

3/20/20

What can I say about this group that hasn't already been said.

You are talented, professional, artistic, generous, kind, and a whole lot of fun!

Always great to see you all at the Discovery Center. Can't wait till next year's Meet the Makers. Take care, Stephen Bridenstine



Peter's Safety Corner



When I wrote my safety column in March, I hadn't imagined the run on 3M respirators that I would cause. Those N95 masks I talked about back then are really in short supply, along with a number of other options for particle filtration while working on your lathe. Unlike using N95 masks to protect you against biological agents like viruses, we woodturners can reuse the paper masks several times with some dusting off and airing out between uses. The same can be said of HEPA filter packs used on half-face respirators – a good vacuuming can help keep them clean and reusable.

With every spring comes the incentive to give the shop a good cleaning and airing out. Once you start cleaning, remember that this activity will also stir up loads of dust, pollen, and mold spores that have been hiding out among your many drying bowl blanks and other sources of wood you've collected.

Cleaning up the shop should involve the same personal respiratory protection that you would use for any woodturning project. If you find yourself short on a good N95 face mask or other respirator, proceed with caution or use this as an excuse to put off cleaning.

You should also make yourself aware of any visitors who have made themselves home in your wood piles. When I lived in Colorado, every cleaning meant spotting black widow spiders – and there were many of them. Here in Kansas, it's the brown recluse spider that you need to watch. Long, spindly legs with a brown body (no stripes like the big hairy wolf spider) are its signature: https://en.wikipedia.org/wiki/Brown_recluse_spider If you're close enough to notice it has three black eyes, then you're too close. My recommendation is to always wear gloves when moving your wood pile(s) around.

Here's my latest bowl made from the system I wrote about last month.

Be safe!

Peter



Some of my Favorite Tools

By: Ned Gatewood

Wireless Remote Control

Some conveniences in the shop are worth \$13.86, and this simple device is one of them.

A wireless remote control, such as the one available at Walmart, comes with a transmitter and a receiver. I plug the receiver into an electrical receptacle near my shop-vac and the shop-vac is plugged into the receiver. Using the handheld transmitter, the shop-vac can be turned on and off from anywhere in the shop.

The shop-vac stays under the workbench in my shop. There's a hose going to the lathe with a wide nozzle mounted at the back of the lathe to collect dust when sanding. With the transmitter at the lathe, the shop-vac can be easily turned on and off without going to the shop-vac each time. It's so convenient!

To clean up my shop, I used to drag the shop-vac by its hose all around the shop. The hose often came off the shop-vac as I tugged on it, and it often got caught up as it tripped over its own electrical cord. By switching over to a 16' hose and the transmitter in my pocket, the shop-vac can be turned on and off from any place in the shop.

These inexpensive remotes work well for things like a shop-vac, a light, a radio, or a box fan. However, there is a limit in the size of the electrical device they can control. They can handle the amps drawn by lights for instance, and a shop-vac probable tests the limit of these remotes. A two horse power dust collector will burn one up pretty quickly. So for a dust collection system, you will need a remote intended for a larger motor.



Flint Hills Woodturners is a 501(c)(3) non-profit composed of individuals who are interested in learning and promoting the art of turning wood. Formed in March 2015 for hobbyists in the Flint Hills region of Northeast Kansas, the club welcomes all interested people to visit our meetings to get a sample of this inspiring hobby. You will find warm people from novice to expert willing to share with you. Flint Hills Woodturners is a chapter of the American Association of Woodturners (AAW).



President

Ray Case

president@flinthillswoodturners.org

Vice President

Robert Kloppenborg

Secretary

Barbara Drolet

Treasurer

Ross Hirst

Program Director

Dennis Biggs

Operations

Steve Bietau

Member at large

Bob Holcombe

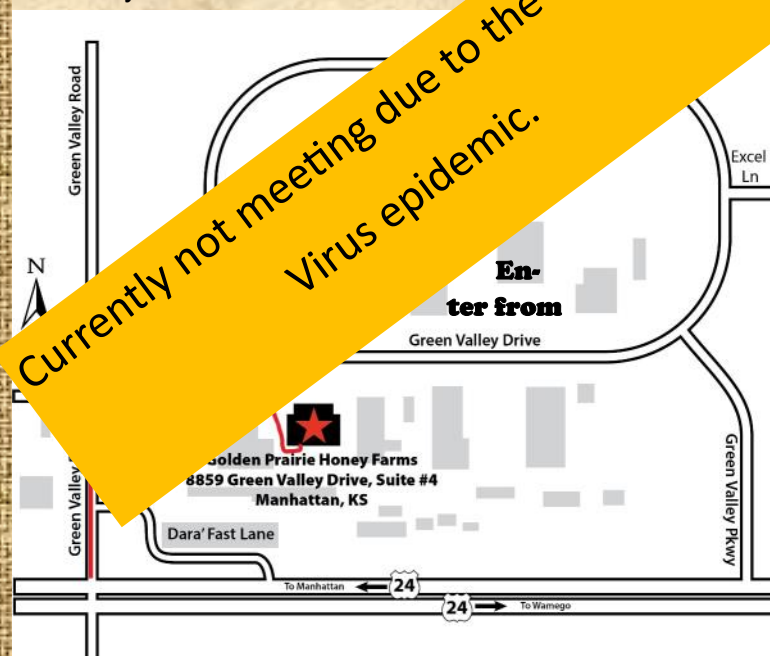
Past President

Tom Boley



Unless otherwise announced, meetings are held at
8859 Green Valley Drive, Suite #4, Manhat- tan
KS

Meetings start at 9:00am but come
any time after 8:00am.



The American Association of Woodturners (AAW) is a nonprofit 501 (c)(3) organization, dedicated to advancing the art and craft of woodturning worldwide by providing opportunities for education, information, and organization to those interested in turning wood. Established in 1986, AAW currently has more than 15,000 members and a network of more than 350 local chapters globally representing professionals, amateurs, gallery owners, collectors and wood / tool suppliers.