

**June 2020**

**Social Distancing Edition #3**



"Uncle Sam" graphic created by Bob Holcombe a few years ago. With the government involved in telling us what we can and cannot do these days, David Delker thought this would be a cheerful reminder for everyone to relax and continue having fun turning wood!



[Flinthillswoodturners.org](http://Flinthillswoodturners.org)

**June 2020**

**Social Distancing Edition #3**



## **Heart Shaped Bowl Project**

### **"Come One Come All. Join In The Fun"**

The board is highly encouraging all members to participate in a project to turn a combined total of a 100 or more heart shaped bowls that can be given to covid front line workers on behalf of the Flint Hills Woodturners Club. Once your bowls are completed we are suggesting 2 ways to distribute them. First would be for you to think of and give one of your bowls to someone you feel has been a front line worker that you would like to bless. Second the club can collect your bowls and find appropriate places to bless workers. We are asking that you present them on behalf of the Flint Hills Woodturners club as an appreciation for all they have done and their sacrifice during this time. For our club records we would love to know how many you have made so we can see how our goal of 100 is progressing. So please email me at [president@flinthillswoodturners.org](mailto:president@flinthillswoodturners.org) and let me know how many you have made. Also if you want the club to distribute them please email me and I will arrange a time to pick them up.



Our very own Dennis Biggs has been videoed making a heart shaped bowl as a demonstration for you to follow. These are fairly quick and simple and can even be made from flat stock boards. Between the turning and sanding it's about an hours worth of time. We encourage you to watch the 2 part video's which can be found at the following links.

Heart Shaped Bowl Part 1.

Heart Shaped Bowl Part 2.

<https://www.youtube.com/watch?v=8EhQ1DQK00U>

<https://www.youtube.com/watch?v=PffcG4nXx-U>

Right click on the link and select "Open Hyperlink".

You can also go on YouTube and put Heart Shaped Bowl Part 1 and 2 in search and find it that way.

**Bless those who have blessed and sacrificed for you.**

**Flinthillswoodturners.org**

# Meet My Lathe



David Delker

It is a Robust American Beauty. It's my third lathe, and it replaced a Jet 1442, which replaced an old Craftsman lathe.



# YouTube Channel

**Flint Hills Woodturners now has a YouTube Channel.**



**Flint Hills Woodturners**  
2 subscribers

Over the next weeks, months and maybe years Flint Hills Woodturners hopes to provide a platform for woodturning videos to be available to our members and others as well. Our channel was created so firstly, during this Covid-19 Pandemic time, we can still share with our members and stay connected. Our first 2 video's are the recent Heart Shaped Bowl Demonstrations. We also know that you our members may be able to add to the videos. Maybe you have a tip and trick to share or even a shorter demonstration. It is best if the video's are under 30 minutes. Even better if they are under 15 minutes.

For the time being, based on the size of the video file, you will need to contact me and we will see how to get the video put on our channel. Please email me at **president@flinthillswoodturners.org** or call me at 785-313-3986 if you have questions or a video to share. You can use most cell phones to record a video or a camcorder works as well. The best way would be for you to download the file on a thumb drive and that can be used by me to upload to the channel.

More to come on this.

# June 2020

## Presidential update



Hello all.

I want to first thank each of you for your continued patience and understanding during this season where we have been unable to meet. The board members have now had two Zoom meetings to continue to discuss If, When, How and under what kind of circumstances we as a group will meet again. So I want to give an update as to where we are at in the process.

Let me start by saying that we, as a board, are approaching this situation with all the members safety as one of our highest values and goals. Even within the board members we have people that are in the medical field as well as in the research and exploration of this virus. Rest assured that we are listening to their expertise and using their knowledge as we make our decisions.

Much discussion has taken place about where to meet and under what kind of circumstances we would feel a higher level of comfort, yet at the same time, providing a worth while club meeting environment.

So I'm sure you are all wanting to know when we will start meeting again. Well to be honest we don't know exactly when that will be. We have however been discussing many aspects of what we would need to see or have in place to allow us to begin to meet again. Here is a list of some of the items we

are watching and using to make our decision.

1. State and local county mandates and suggestions.
2. Safety and risk factors for our club demographic.
3. Best social distancing practices
4. Meeting facility that provides for best practice of these measures.

Our current discussions have lead us to decide that the earliest, (and this is subject to change) that we would work towards meeting again in August 2020.

Because using another facility would have many significant challenges we are heavily leaning on using the same facility that we have been using previously. I have been having discussions with the Golden Prairie Honey Farm facility to get a sense of what they are doing to the facility during this time frame. While they can't feasibly sanitize every square inch of the warehouse they are using steps, after they work, to keep the main areas clean and disinfected.

For each of us as members we are all dealing with the virus differently. I'm sure there is a wide variation from ultra caution to much more openness. We on the board want to be respectful regarding these differences but yet also work towards getting our club back to meeting again.

# June 2020

## Presidential update



When we begin meeting, you will have to decide for yourself whether you are comfortable with the arrangements and circumstances you will be exposed to while we meet. I know that we can and will not please everyone but it will be a starting point.

One of the factors that was extremely important, for most if not all the board, was the wearing of masks during our meeting. I know that this topic is highly debated. To some this is nothing new and you are already in that mode. To others this is something that you are not practicing. But for the overall safety of all we will require any member coming to the meetings to wear a mask. The one exception will be for the demonstrator partially because they will be wearing a face shield as they turn.

Our time together might look and feel very different. It is still highly suggested that some kind of social distancing measures be used while around others, especially larger groups). So we will need to use social distancing practices where possible during our meeting. Our show and tell will probably be that each member with something to show will come up to the lathe area and tell about their piece. We most likely will not have coffee and donuts for a while. You will need to bring your own beverage. On an average we had about 40 members coming each meeting. If we have this many it will be very

challenging to fit everyone and have space between us. So I am going to ask for your feedback.

“If we started meeting again in August would you attend knowing that we will need to sit apart from each other. The facility does not have the highest levels of sanitation. No refreshments and you would be required to wear a mask.”

I am asking that you respond back to **president@flinthillswoodturners.org** over the next couple weeks. Let me know a “Yes or No” and please provide any comments or concerns you might have as well. This will give us a better idea of the numbers as we try to restart.

Again we will have further information as it is available about what we plan to do to keep the safety of all our priority.

“Turn what you Love and Pass on the Love”

Ray Case—President

# Cart for Air Compressor and Vacuum Pump



By: David Delker

Tom Boley gave a very informative demonstration recently and showed a typical vacuum chuck application. That prompted me to write this article regarding my vacuum chuck setup.

I purchased my vacuum chuck system from the Frugal Vacuum Chuck company (see <https://www.frugalvacuumchuck.com/> for more information). It sells for as low as \$205, plus shipping. The pumps are remanufactured units removed from medical equipment, and they have a one-year warranty; after four years of use I'm still very pleased with mine. There's a video on their website that explains what you get with the system, so I won't go into those details here. Instead, this article will focus on the cart that I made to house the unit.

I got tired of the noise my air compressor makes when I'm using a pneumatic nailer in my shop. Invariably, the compressor would turn on and startle me when trying to align and nail the pieces in my project. While my vacuum pump is quieter than my air compressor, it makes an annoying noise that I wanted to muffle. I decided to build a wooden cabinet around them both. Besides noise reduction, my goal was to add some storage space for air hoses, compressor accessories, and vacuum chucks. The cabinet I made is basically a box made of 3/4" plywood, assembled with pocket hole screws. There is no fancy joinery in the drawer boxes either!

I sized the cabinet to roll under one of my workbenches, so it is out of the way unless I need it. I made the top surface about 1/2" lower than the sides and back to prevent tools (think expensive gouges) from rolling onto the floor. I mounted a pressure regulator and pressure gauge for the compressor on the front of the cabinet, along with the bleed valve and vacuum gauge for the vacuum pump. I used standard quick-connect pneumatic fittings to connect hoses to the unit.

Make sure to cut some holes in the bottom of the cabinet to allow for "makeup air" for the compressor and the vacuum pump. That also keeps things from overheating.

The power switches should be rated appropriately for your compressor and vacuum pump. I used a removable power cord (like the one that plugs into the back of your computer). Inside the cabinet I wired an electrical junction box into which the compressor and vacuum pump connect.

The photos should tell the rest of the story. My roll-around cabinet has worked out great as an extra work surface, as well as for extra storage. The noise level from the compressor and vacuum pump is greatly reduced, and the equipment stays free of dust. Last, but not least, the snazzy, custom-turned oak knobs on the front panel are proof that this project was made by a woodturner!

# Cart for Air Compressor and Vacuum Pump and Vacuum Pump

Continued



Cabinet provides a generous work surface for tools and supplies. The entire unit rolls under my workbench when not in use. Gauges are easy to read at a glance.



Plenty of storage space for hoses, fittings, and vacuum chucks.



Doors provide access to compressor and vacuum pump for servicing. Note the slots for air circulation. Additional slots (not visible) are behind compressor and vacuum pump.

# **FHWT Board Meeting Minutes**

**Date: June 6, 2020, 9:00 am**

**Location: via Zoom**

Attendees: Ray Case, Barbara Drolet, Ross Hirst, Dennis Biggs, Steve Bietau, Tom Boley, Bob Holcombe, Robert Kloppenborg

The board discussed considerations for restarting such as timing, potential venues, sanitizing, and distancing. Although cases continue to decline in the Geary/Riley/Pottawatomie region, there is concern of a resurgence in cases with the economy reopening. “Ya Gotta Eat” and Skill Enhancement will likely be the first gatherings to restart. Eventually we will resume our in-person monthly meetings when the Board considers it safe to do so. It was decided that July is too early for an in-person meeting. August is possible if cases continue to decline and the membership is comfortable with gathering.

The Bee Shop has re-opened and welcomes us to resume our monthly meetings. One or two board members will visit the owner to find out what criteria they are following to protect their workers, and any new policies/procedures they have put in place. The space will also be evaluated for cleanliness, social distancing and airflow. In general, restart criteria considered for using the space include distancing of chairs, slight changes to how we would do show & tell, a requirement for wearing face masks (cloth/surgical), and having both back doors open to increase air exchanges. Depending on the interest and comfort level of the membership to return to our monthly meetings, the number gathering at one time could be controlled by splitting attendees into morning and afternoon sessions or having Sat/Sun sessions. The pros and cons of trying to hold the meeting in an outside space was also discussed.

## **Heart bowl project**

We recognize the efforts and impact many folks in our communities have had on the lives of others during this difficult time. Whether it be first responders and medical staff, the sanitation/hospitality folks that are keeping our spaces clean and safe, or the retail personnel that show up every day so we can get the food and supplies we need to keep going. All of these folks deserve our appreciation. Turning a small piece for someone is a great way to say thank you. Thus, the Board has proposed the ‘FHWT Heart Bowl Project’. Our goal is to have the Club turn 100 bowls and donate them to deserving folks in their communities either directly, or giving them to a Board member for the Club to donate. Dennis and Ray have created a video demonstration on turning a heart bowl which can be found on the FHWT YouTube Channel by searching Flint Hills Wood Turners Heart Bowl Part 1 and Part 2. Click Like and Subscribe!

We would like to be sure the FHWT Club is recognized and publicized in this gesture, so be sure to let the person know who we are and consider writing a small publicity piece for your local newspaper.

## **The Manhattan Arts Center (MAC)**

The MAC has a glass display case they have offered previously to us for a semi-permanent display. We have not, as yet, taken advantage of that opportunity. Recently they had an opening in their main gallery and are offering the Club a 30-day exhibit (Sept 26-Oct 24) with a reception on Friday, Oct 2, 5:00-7:00 pm. Members will be asked to make things to submit to a jurying process which is yet to be determined. Also, yet to be determined is how and where members will be asked to deliver their work for jurying and if there will be a limit to how any pieces each member may submit based on how many pieces the gallery can accommodate. We plan to also set up a small lathe with turning tools and have a display showing stages of the turning process.

The next Zoom board meeting will be in about three weeks TBD.

Meeting adjourned 10:30 am

**Secretary—Barbara Drolet**





**Great News!**  
**by Tom Boley**

The Manhattan Art Center surprised me a few days ago when they sent an e-mail offering an exhibit to us in the main gallery this year. Before, their next available period was in 2021 and that is what I had told you. One of their exhibitors had to withdraw so the period 26 Sep to 24 Oct is now available for us. We have accepted their offer so it is time to ramp up our artistic expression and make some really nice pieces worthy of an art gallery.

Most of us make bowls and lots of them. I think a display of mostly bowls just doesn't show off what woodturning can be so I encourage all of us to get creative with your bowls but to also branch out into more artistic pieces. We will have space for 40 to 50 pieces, mostly on pedestals scattered around the gallery floor. There is likely to be a two dimensional show at the same time displayed on the walls of the gallery but we are invited to provide wall art, too, if we would like.

One of the questions is how to select the pieces for display from among the many we have all made. When I first spoke to the gallery show director, she offered to make up a jury committee of about three people for us. However, she has now been replaced by another and the MAC would like for us to jury our own work. President Ray Case will appoint a jury committee from among our members to select our best works for the gallery. There is no limit to how many pieces you may submit for review but the pieces selected will be dependent upon how many are submitted, how many members participate, the size of the pieces, and the quality of the work, quality being paramount.

I have also offered to the MAC to bring a lathe and some tools as a static display during the show as well as to perhaps do a live woodturning demonstration on Saturdays during our time there.

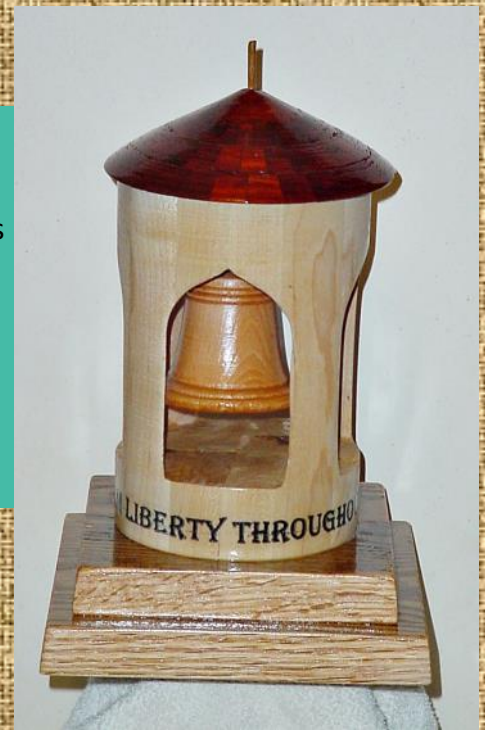
This is an exciting opportunity for Flint Hills Woodturners to strut our stuff in front of our home crowd. We constantly speak of being a 501(c)3 non-profit educational organization. This is the perfect opportunity to educate a whole different segment of the area population through our show at the MAC. I encourage you to get those creative juices flowing. Think outside the bowl. Think wall art. And do your best work.

# Home Gallery Show and Tell



Victor Schwarz

Called "The Liberty Bell" this inside out turning is 11 inch high. The bell, patterned after the famous bell, is of western red cedar. The body is maple and the roof is padauk. That base is red oak. The inscription "Proclaim liberty throughout the land" is cast on the original bell. I tell people that the crack is on the other side.



This is a candleholder made from flame box elder that came from Georgia. It is an example of inside out turning.

Modeled after a French vase. Flame box elder and cedar. Note the slim design.



An open segmented vessel. Body is random flame box elder, sapele and black limba. (Not intended to be random, but that is the way things sometimes turn out.) Open base and open lid are walnut and the finial is dark green poplar. 14" high.



# Home Gallery Show and Tell



Vaughn Graber

The turkey pot call is bocote. It has a wooden sound board with a slate striker plate. The striker head is walnut and the dowel is hickory. I used a book I have on game calls for the design. "Turning Custom Duck and Game Calls." by Ed Glenn and Greg Keats.



The shelves are maple. The one on the left is stained Early American and the right one is Mahogany. These were made using the article by John Lucas from the last issue of the AAW mag.

# Home Gallery Show and Tell



Tom Shields

I have been making some shavings, although nothing very fancy. A couple bowls, one walnut and one elm. A flask, walnut and ambrosia maple, and a couple of Christmas ornaments. Photos to follow.



# Home Gallery Show and Tell



Ross Hirst  
Heart Shaped Bowls



Peter Dorhout  
cedar bowl.



# Peter's Safety Corner



This Father's Day marks the 2<sup>nd</sup> anniversary of me almost only being able to count to 8 with both hands after my table saw and I had a minor disagreement. So, I thought I would reflect on that accident this month and write out a few tips about how you could avoid making the same mistake I did and avoid a trip to the ER. It wasn't fun or cheap.

Saws, routers, or welders – we all have our favorite “most dangerous tool.” To be honest, most tools carry a certain degree of risk when we use them, and our job as woodworkers or woodturners is to know our tools and minimize the risk. What can we do to minimize risks in the shop?

If you are considering a new tool, I recommend that you connect with one of the club members who may have a tool that you are thinking about buying. The FHW club has offered a skills enhancement night (we will do that again when we can all gather safely soon), and that's a perfect time to try out a new tool and talk with members about their tools. You could also ask at our monthly meetings if someone has a tool that you're interested in trying. Many of us members are informal mentors for other members who are working at building their skills. In any case, asking a club member about his or her tools is a great way to learn about how those tools operate safely.

Another source of safety training and understanding risk is a tool shop or distributor. While I'm not advocating for a specific store, Woodcraft in Lenexa is one of the closest major retail suppliers to Manhattan and offers classes on selected tools. The staff there are very knowledgeable about the tools they sell and will help you understand the safe operating procedures for them.

Even if you have tried a tool at a friend's shop or have had training at the distributor, your best source for safe operating procedures after a new purchase is the user's manual. When you buy a new tool, read through the manual and understand all the risks of using the tool as well as how to keep it clean and in good repair. Keep the manual in a convenient location (with your other manuals) and take a moment to refresh your memory before you use a tool after it has been sitting for a while. It's also important that when you decide to upgrade to a new model and sell your “starter” tool, you should help the new owner by providing him or her with the user's manual and take a moment to share a few safety tips before they leave.

My recommendation is that you take an effort to minimize the risk of using a tool, a new one or one that's been in your shop for a while, by reminding yourself about the potential hazards before you start. In particular, if your tool has been sitting idle for a while, take 10 minutes to review the safety steps while you check to be sure it is sharp and properly lubricated – those 10 minutes might just save you a few hours in the ER.

Be safe,  
Peter

# Some of my Favorite Tools

By: Ned Gatewood

## SOME OF MY FAVORITE TOOLS

### Pyrography Tools

The joy of turning a bowl, platter, vessel, or box need not stop with the completion of its form and applying a finish. That can be only half the fun! More can be done to enhance the beauty and value of a turned object by embellishing its surface with dyes, carving, or pyrography.



Consider adding pyrography to your wood turning skills. Pyrography is a technique of decorating wood, leather, gourds and other materials with a red-hot tip, and it's been around since ancient times. It is a great opportunity to be creative beyond the form and finish of a turning. The textures and images you can add to a piece are limitless. If you like, this wood burning craft can be used to replicate an image of Siting Bull or an image of your dog which you can then hang on the wall. But if wood turning is your thing, adding simple textures or symbols on a platter's edge will dramatically enhance the piece after you turn it. Just Google "pyrography wood platters" and you'll see a lot of great work that may inspire you.

One of the benefits of pyrography is the time spent doing it is extremely relaxing. In your shop, you can sit down in a comfortable chair with your turned creation (You do have a comfortable chair in your shop, don't you?) your pyrography machine, and a small fan blowing the smoke away, and go to work. A not too complicated design will take less than an hour.

Leading pyrography machine manufactures sell a variety of tips for producing endless patterns and textures. And you can also make your own tips by using nichrome wire - the wire used in heating elements that doesn't distort under high heat. Jacobs.online.biz is a good source. Wrap the nichrome wire around a short lengths of round or square brass tubing found at hardware stores for branding shapes. See picture. Or wrap nichrome wire around a nail to get a basket weave pattern. See Molly Winton's videos for a lot of good ideas. There are a lot more techniques for making your own tips and designs. The possibilities

# Some of my Favorite Tools

By: Ned Gatewood

A brief word on how pyrography machines work. They convert 110v AC power to high load/ low voltage DC power by way of a transformer, much like a soldering iron. The tip can burn you but it won't give you an electrical shock.

One of the best pyrography machines is the Burnmaster made by Mastercarver. Their Hawk model comes with a variety of ten tips and cost about \$200. The Burnmaster's transformer is large so there is a short recovery time (the time it takes for the tip to reheat between burns). They sell a wide variety of tips and the machines have a three year warranty.

Pyrography is an easy and inexpensive method to enhance wood turned projects that's fun to do and adds value to your work through surface embellishment. So give it a try!

Ned Gatewood





**Flint Hills Woodturners** is a 501(c)(3) non-profit composed of individuals who are interested in learning and promoting the art of turning wood. Formed in March 2015 for hobbyists in the Flint Hills region of Northeast Kansas, the club welcomes all interested people to visit our meetings to get a sample of this inspiring hobby. You will find warm people from novice to expert willing to share with you. Flint Hills Woodturners is a chapter of the American Association of Woodturners (AAW).



**President**

Ray Case

[president@flinthillswoodturners.org](mailto:president@flinthillswoodturners.org)

**Vice President**

Robert Kloppenborg

**Secretary**

Barbara Drolet

**Treasurer**

Ross Hirst

**Program Director**

Dennis Biggs

**Operations**

Steve Bietau

**Member at large**

Bob Holcombe

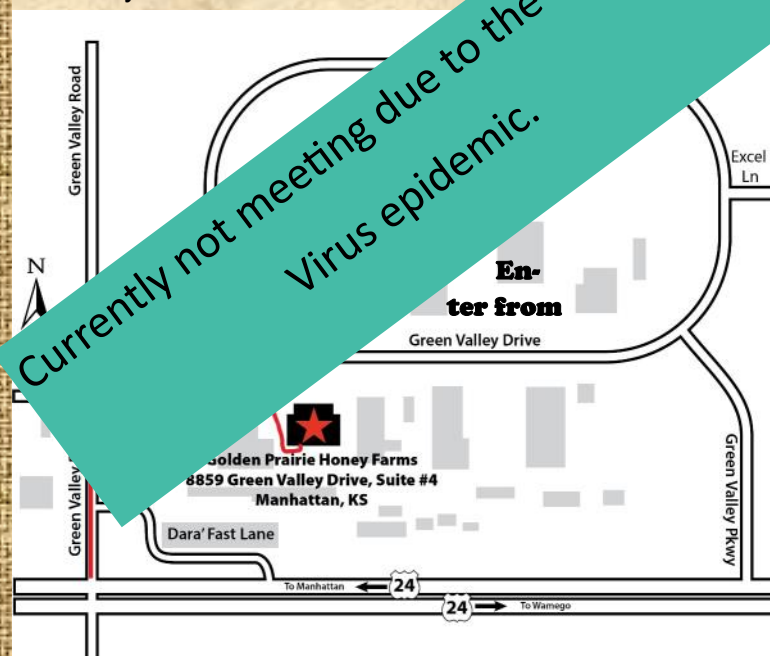
**Past President**

Tom Boley



Unless otherwise announced, meetings are held at 8859 Green Valley Drive, Suite #4, Manhattan, KS

Meetings start at 9:00am but come any time after 8:00am.



The American Association of Woodturners (AAW) is a nonprofit 501 (c)(3) organization, dedicated to advancing the art and craft of woodturning worldwide by providing opportunities for education, information, and organization to those interested in turning wood. Established in 1986, AAW currently has more than 15,000 members and a network of more than 350 local chapters globally representing professionals, amateurs, gallery owners, collectors and wood / tool suppliers.