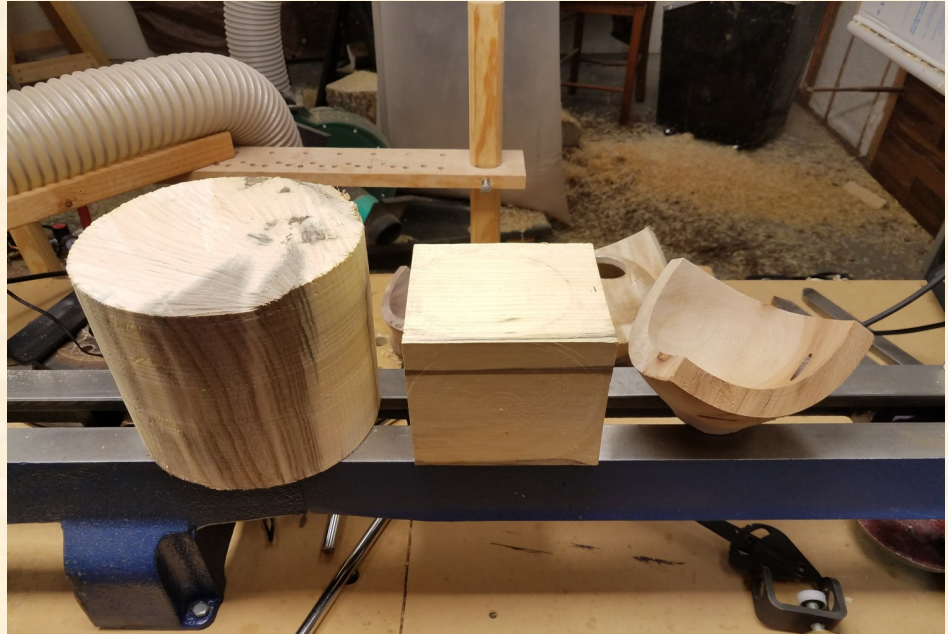


June 2018



**From Log
To Cube
To 3 corner bowl**



The June demonstration will show how, from a simple log or wood cylinder, you can create a cube using the lathe only and then with that cube make a 3 corner bowl. For some their budget allows them to afford all the latest and greatest tools in the shop. For others their budget doesn't. I know that it has taken me a number of years to put together the work shop and equipment that I have so far. One piece of equipment that is on my list still is a band saw. I often feel

like I'm limited in what things I want to turn simply because I don't have that band saw yet. Well... Our demonstration in June will show how you can still be creative and turn items even with equipment limitations.

Ray Case

In this issue:	Board meeting minutes.....4	May's Program summary.....9
June meeting program.....1	Midi Lathe for sale.....5	Trees of NE Kansas.....12
Call to the Lathe.....2	Community Involvement.....6	Announcements.....13
Meeting Minutes.....3	Show and Tell.....7	Club Information.....14

<http://flinthillswoodturners.org>

June 2018

Call of the Lathe

We are well under way toward achieving our goals for this year. Many thanks to Steve Bietau, Operations Director, and the entire crew who came out for the Flint Hills Festival at Blue Earth Plaza near the Discovery Center on May 19th, our second demo there this year. The *Mercury* reported that hundreds of people attended and I think most of them made their way to our booth to watch some woodturning and talk about the craft. That is real public education and, whether we get any new members from it or not, it sure is fun.

There is an article elsewhere in this newsletter about selling our original Delta Midi lathe which we bought used about two years ago. This will be a fine lathe for someone who is just starting out and not sure if this is really what you want to do or not OR for someone who doesn't have a lot of space for a lathe but would like to make some round stuff.

We *almost* have a new web site. I have been trying to learn how to manage it so bear with me as I climb that steep slope of web site knowledge and skill. If ANYONE out there would like to take this on and is knowledgeable of Word Press, I would welcome your assistance or even having you become our Webmaster. As I write this, we still have the old web site up but we hope to soon shift the content to the new site while keeping the old URL of flinthillswoodturners.org.

Our Vice President, Ray Case, is trying his hand at producing a newsletter for us this month. This very newsletter is his first effort. Many thanks, Ray. We appreciate your efforts. A good newsletter is the lifeblood of an organization like ours.



Thank you.

This may be the year when we bring in our first professional outside demonstrator. Dennis Biggs is in touch with a couple guys who both do a good show. They are expensive, though, so our SOP provides that we will assess a fee from all who attend such a meeting to help defray the cost. With these two, we will likely ask for about \$10 per person, which should cover about half the cost. But these professional demonstrators know their stuff and it is always a pleasure to watch them and learn. We will try to also include a one day workshop either the day before or the day after their demo at our regular meeting. We'll keep you posted.

Skill Enhancement will offer something new this month. We'll have two SE evenings, one on Monday the 18th and one on Monday the 25th, but the first one will be Rusty Turners Night for those of you who want to get back to turning but may be a bit uncertain about sharpening your tools, mounting the wood safely, and applying just the right cut with just the right tool to get the job done. The second SE evening will be for any member who just wants to spend a couple hours at the lathe getting some help from one of our instructors. Come on out.

Tom Boley—President

The monthly meeting of the Flint Hills Woodturners began at 9:00 a.m., May 5, 2018 at the Golden Prairie Honey Farms, located at the Green Valley Industrial Park, 8859 Green Valley Drive, Manhattan KS.

President Tom Boley called the meeting to order.

The meeting began with Show and Tell. Victor Schwarz, Randy Zelenka, Ned Gatewood, Ross Hirst, Dennis Biggs, Joe Beck, Colton Haug, and Tom Boley shared their recent woodturning work with the club.

Officers' Reports:



President: Tom Boley thanked those who helped with the club's birthday party and potluck, and he reminded the club we started three years ago with twenty-one members and we now have more than fifty members.

Tom welcomed a first time visitor, Greg Fief. Barbara Drolet will be the club's liaison to AAW and will be involved in AAW's Women in Turning, whose mission is "to encouraging and assisting women in their pursuit of turning, to sharing ideas and processes to further members' skills and creativity, and to increasing participation of women in the field of woodturning". We are being asked to donate turnings to Manhattan Hospice for their fund raising auction. More information to come. There may be Skill Enhancement sessions soon titled Rusty Turners Night where members that haven't turned for some time can come and renew their turning skills. There will be a board meeting after today's meeting to discuss a variety of issues; members are encouraged to attend. The club's by-laws and standard operating procedures were distributed and noted changes will be discussed at board meeting. Bob Holcombe has retired as newsletter editor; his efforts for the past three years were acknowledged. Bob was given an engraved Doug Thompson tool handle and a lifetime club membership in recognition of his outstanding service. Ray Case has volunteered to become the new newsletter editor.

Vice President: no report

Treasurer's Report: we have \$3,794 in the treasury.

Secretary's Report: no report

Program Director: Dennis Biggs reported the June demonstration will be Ray Case making a three corner bowl; July demonstration will be Tom Shields addressing sharpening; Joe Davis will do a demonstration in August – topic to be determined; and there will be a Tips and Tricks demonstration in the future. Dennis will add to the club's regular agenda an autobiographical report from one member each month so members can learn more about each other.

Operations Director: Steve Bietau reported May 19 we will be at the Discovery Center for the Flint Hills Festival making small bowls to give away. We will be at Camp Tomah Shinga assisting the Independence Woodturners woodturning club by providing lathes and tools for the children making pens. Sign-up sheets were passed out for each event.

Newsletter Editor: Ray Case will be the new newsletter editor. Thanks, Ray! He has provided to the board an example of the newsletter he is going to produce. He asked members for their suggestions and that they provide submitted materials for the newsletter.

Website: Tom Boley will meet with the new website designer to go over the details of the website. She will give Tom some instructions for maintaining the website.

Demonstration: This month's demonstration was Bob Holcombe making a wooden spoon (or ladle) and a scoop on the lathe. Bob cited Richard Raffan's book *Turning Projects* as a good reference for techniques and designs. Bob advised using green hardwoods (avoid soft woods as they tend to tear out). He turns the entire spoon or scoop in one turn (not rough turning, waiting to dry, and final turning).

Raffle: Greg Fief, Dennis Biggs, Vic Vinson, and Tom Boley won valuable prizes.

The next Flint Hills Woodturning meeting will be on Saturday, June 2, 2018 at 9:00 a.m. at the Golden Prairie Honey Farm, located at the Green Valley Industrial Park, 8859 Green Valley Drive, Manhattan.

Ned Gatewood, Secretary

Board Minutes

May 5th, 2018

In attendance: Tom Boley, Ray Case, Ned Gatewood, Dennis Biggs, Steve Bietau, and Bob Holcombe

Items discussed:

Newsletter/website: Tom will visit the website designer, Mary, to discuss our new website and to learn how to maintain the website. The hourly fee she charges to non-profits is very reasonable. Don Eisele and Mary are to move existing URL to new content on GoDaddy site. The new website is to have similar elements as existing newsletter. Officers are to enter their own items to the website, such as the treasurer's report. It was suggested a photo gallery of members' work will be an important part of the website; Ray offered to work on gallery and video issues. We can put demonstration videos on YouTube and a link to them on our website.

Buying New Delta Midi/Selling Old Mini Lathes:

Tom suggested selling existing mini lathe and buying a new Delta midi lathe. The midi is far more useful and better for teaching at Skill Enhancement. This was voted on and passed. To sell mini for \$250 ASAP, offering it to club members first.

Outside Demonstrator: Board was generally in favor of inviting outside, professional, demonstrators. Tom to look into available demonstrators and their fees. Board was in agreement that when we have an outside demonstrator presenting at our regular meeting, a fee will be charged to attending members; this is per the by-laws.

By-Laws and Standard Operating Procedures:

Bob Holcombe is to stay on the board to keep the number of board members at seven, as preferred when taking votes.

Board Members Emailing the Membership: The means for board members to email the entire roster of members was discussed. Board members can use the announce@flinthillswoodturners.org email address to send a message to all members. It was uncertain if this was available to new board members. Also, the club shares its roster with Craft

Supplies USA for which they send us quarterly a \$10 gift certificate for each ten members, and it is given away at the raffle. The club does not share its roster publically, but if a member wishes to contact another member, that contact can be initiated with the club president.

Support Gear For New Lathe: Board decided to buy for the new lathe a Hurricane chuck, a Rikon grinder with grinding wheels, a Wolverine sharpening jig, a Vari-Grind sharpening jig, and a short tool rest (possibly provided by Ray Case). We will wait and see if additional lighting is needed.

Recording Demonstrations: It was expressed this is an important issue. With existing equipment, and particularly using two cameras, recording the demonstrations may be difficult. Ray Case to look into.

Workshops: Board expressed favor in having workshops in the future, probably in conjunction with an outside demonstrator, but no specific action was taken. It was expressed that some Skill Enhancement sessions could focus on a specific task. Also, we need to emphasize in the future the value of the mentoring program.

Shop Visits: It was suggested we organize a "shop tour" of some of the members' shops, as it would be informative and fun to see the shops and tools of other members.

Events: As a 501(c)3 non-profit organization, educating the public about woodturning is a mission of the Flint Hills Woodturners club. This year we will participate in Pumpkin Patch, the Discovery Center's Flint Hills Festival, and Camp Tomah Shinga. We will not participate in the Aggieville Mini Maker Faire as attendance has been small and the focus has become for children. We will continue looking at options of how we may share woodturning with others.

Future Board Meetings: It was agreed upon the board will meet quarterly at 7am the day of our regular club meeting.

Ned Gatewood, Secretary

Midi Lathe for Sale

Offered to Members only

Flint Hills Woodturners owns three lathes, one the new Jet at the bee shop, the second a Delta Midi 46-460, and the third, one of the original, and smaller, Delta Midi, designated a 46-250. That is the fourth lathe we pull out at Skill Enhancement. The lathe has six fixed belt speeds, 500rpm to 3700rpm, and will come with a stand/ table, 22" bed extension, knockout bar, a variable speed kit which you can add on, a plethora of tool rests, and other assorted parts.

We have decided to sell that one for \$250 and replace it with another Delta 46-460. The chuck is not included as it will go to the new lathe. If you are interested and willing to pay the \$250 for it, let Tom know at tboley10@gmail.com. The names of all who are interested will go in a nicely turned bowl and someone will draw out the name of the winner. Here is your chance to get a pretty good mini-lathe at a great price. We'll have the drawing at the June meeting. In the meantime, you are welcome to come by Tom's shop to look at it.

Tom



Community Involvement

Our most recent public Demo took place Saturday May 19 as part of the Flint Hills Festival at the Discovery Center in Manhattan.

FHW members including Don Baker, Tom Boley, Dennis Biggs, Kevin Dix, Daniel Joseph, Robert Kloppenborg, Melissa McIntyre, Tom Shields, and Randy Zelenka all volunteered their time to take part.

What started out as a rainy Saturday, turned out to be a beautiful spring day as the clouds dissipated by late morning. Attendance grew as the day went on. According to Discovery Center staff official attendance for the day was 2703, a new record !

Steve Bietau, Operations



May: Show and Tell



Dennis Biggs



Barbara Drolet



Colton Haug



Ned Gatewood



Joe Beck

May: Show and Tell



Ross Hirst



Randy Zelenka



Tom Boley



Victor Schwarz

May's Program Re-visited

Spoons and Scoops

Bob Holcombe

Demonstration: This month's demonstration was Bob Holcombe making a wooden spoon (or ladle) and a scoop on the lathe. Bob cited Richard Raffan's book *Turning Projects* as a good reference for techniques and designs. Bob advised using green hardwoods (avoid soft woods as they tend to tear out). He turns the entire spoon or scoop in one turn (not rough turning, waiting to dry, and final turning).

Bob began turning a spoon by roughing out a blank and putting a tenon on one end. Depending on the spoon design, this method can actually make two spoons from a single blank, as once the near finished blank is shaped, it is band sawed in half creating two scoops. (Refer to Raffan's book for a full description.) He uses calipers to establish the blank's diameter. He has several calipers, each one set at a specific diameter which he color codes with colored tape; this way he saves time and does not have to change the calipers for different measurements. Bob uses a template to establish the ball of spoon; it is critical the front edge of the spoon is a perfect one-half round.

Next, Bob formed the handle and then sanded while the spoon was still on the lathe. It helps to also hand sand with the grain to reduce sanding marks. Then, off the lathe, and mindful of the grain pattern, he uses a band saw to cut the form into two spoons, producing a curved handle on each spoon. The form of the handle must be sympathetic to the form of the spoon's bowl. Bob then mounts the spoon's bowl in shop-made jaws on a scroll chuck to finish turning the spoon. He removes the inside of the bowl with a scraper, being careful to make the entire bowl the same thickness. Then off the lathe again, he uses a belt sander to sand the curved shape of the handle. With a little more sanding, the spoon can be finished with



an oil finish, or with no finish at all.

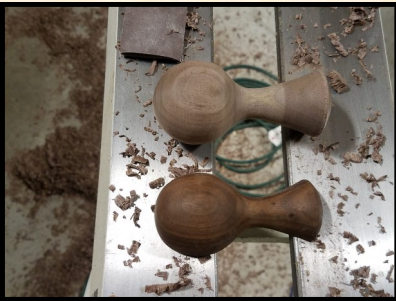
Bob then made a scoop by first turning a 2" blank on centers and made a tenon on one end, remounting it on the tenon, and then hollowing out the end of the blank. For a 2" diameter scoop, the depth of the hollowing out must at least 2". To hollow out the end grain of the scoop, Bob uses a scraper, which he often re-sharpens. With a spindle gouge, he shapes the outside of the scoop, and with a parting tool he reduces the diameter behind the scoop at the handle. He shapes the handle and then parts the scoop off of the lathe. Now, he band saws off the top portion of the scoop's bowl to form the open scoop. Using a belt sander, he smooths the just band sawed top of the scoop, hand sands the entire scoop, and applies an oil finish, or no finish at all.

Ned Gatewood, Secretary, Photos by Ray Case

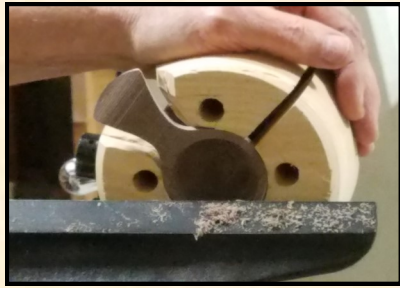
Spoons



May's Program Continued.



May's Program Continued.



Scoops



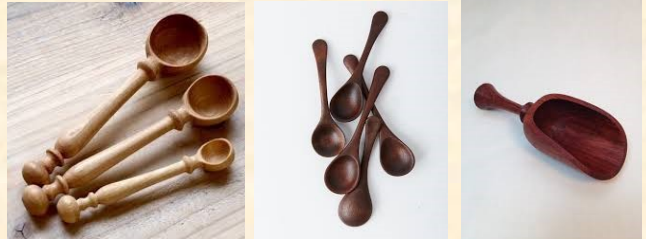
May's Program

Continued.

Below you will find the links related to the scoops and spoons

- <http://www.instructables.com/id/How-to-Turn-Scoops/>
- <https://www.youtube.com/watch?v=-UXTFCAaokU>
- <https://www.youtube.com/watch?v=5TF2h4bAys4>
- <https://www.youtube.com/watch?v=jgm9gmtHhNo>
- <https://www.youtube.com/watch?v=QskYxx47u3g>
- <https://www.youtube.com/watch?v=e5-A28EEhbl&t=2s>
- <https://www.youtube.com/watch?v=RQ5hIxnRsmU&t=13s>

Remember the challenge is to make your own spoon or scoop for the next meeting.



Trees of Northeast Kansas

Oaks:

Janka Hardness White oak: 1360 Red oak: 1290

There are more than twenty species of oak trees, and all can be placed into one of two large groups: white oaks and red oaks. The shape of the leaves is the only reliable factor for determining into which group a tree belongs; the color of the wood is not used to classify if an oak is red or white. Generally, though not always, red oak has a pinkish tone, while white oak is darker gray. In Kansas, Northern Red Oak (red), Bur Oak (white), Pin Oak (red) and Chinkapin Oak (white) are commonly found. The wood of red and white oak have similar grain patterns, but the grain of white oak is straighter and tighter than red oak. White oak is almost as hard as hard maple, and red oak is slightly less hard than white oak. Care must be taken when drying any oak wood, as it has a tenancy to check and also to crack along the growth rings during drying. Because of oak's high tannin content, it ebonizes well. Also, tannins turn black in presence of iron acetate, so don't leave wet oak chips on your lathe's bed.



Red Oak Bark



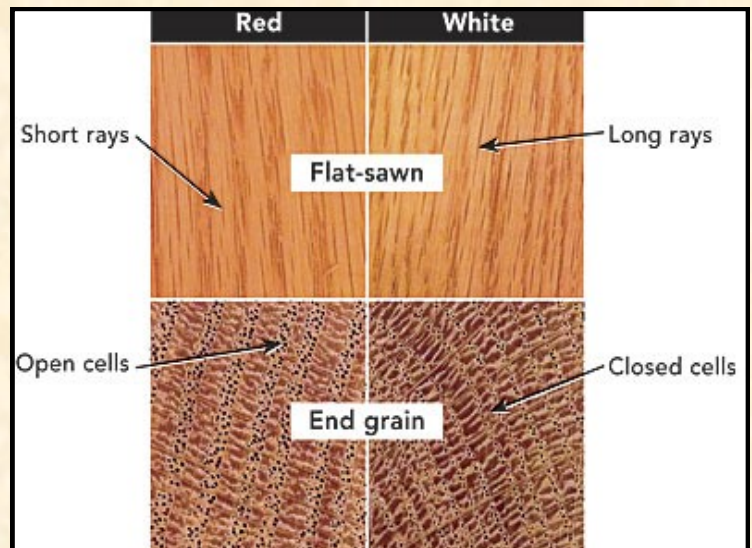
Red Oak Leaf



White Oak Bark



White Oak Leaf



An Excellent Source of Wood

The faint sound of a chainsaw from a neighbor's yard is music to a wood turner's ears. Ah, a chance to get some unexpected wood to turn. And when we are driving around and see a tree care company taking down a tree, we can't help but to stop and see if there's a few pieces of wood we might have. Wood turners are always on the lookout for that chance encounter of finding a great piece of wood.

So when Tom Shields and I went recently to the town of Riley to check out a re-opened sawmill, our hopes were high that we'd find a source of wood suitable for turning. We weren't disappointed.

From the picture, you can see Ember Woods Sawmill has a large supply of logs of all kinds, and the owner, Scott, is more than happy to work with a turner to find just what he's looking for. Scott has a wide variety of native woods from which you can select a desirable log. The day we visited, he had some beautiful pecan wood. And while custom milling of lumber is his main business, he's happy to sell you at a good price a piece from his pile of abundant and beautiful cutoffs, as these cutoffs will otherwise be thrown into the fire of his firewood heated kiln.

So take a trip to Riley, and you might find some good wood for your next turning.

Ned Gatewood



320 S. Broadway St.
Riley Kansas
Scott Jacobs
785-223-1875



Barbara Drolet will be the club's liaison to AAW and will be involved in AAW's Women in Turning, whose mission is "to encouraging and assisting women in their pursuit of turning, to sharing ideas and processes to further members' skills and creativity, and to increasing participation of women in the field of woodturning".

Flint hills woodturners is pleased to announce the first ever life time membership was awarded to:



Bob Holcombe

Bob Holcombe has retired as newsletter editor; his efforts for the past three years were acknowledged. Bob was given an engraved Doug Thompson tool handle and a lifetime club membership in recognition of his outstanding service.



Flint Hills Woodturners is a 501(c)(3) non-profit composed of individuals who are interested in learning and promoting the art of turning wood. Formed in March 2015 for hobbyists in the Flint Hills region of Northeast Kansas, the club welcomes all interested people to visit our meetings to get a sample of this inspiring hobby. You will find warm people from novice to expert willing to share with you. Flint Hills Woodturners is a chapter of the American Association of Woodturners (AAW).

Flint Hills Woodturners Program and Events



President
Tom Boley
 president@flintheillswoodturners.org

Vice president
Ray Case
 vicepresident@flintheillswoodturners.org

Secretary
Ned Gatewood
 secretary@flintheillswoodturners.org

Treasurer
Tom Shields
 treasurer@flintheillswoodturners.org

Program Director
Dennis Biggs
 program@flintheillswoodturners.org

Operations
Steve Bietau
 operations@flintheillswoodturners.org

<http://flintheillswoodturners.org>

June 2nd	Monthly Meeting Ray Case 3 corner bowl	Golden Prairie Honey Farms 8859 Green Valley Drive, Suite #4, Manhattan
June 14th	You Gotta Eat! Noon	
June 18	Skill Enhancement 7:00—9:30 PM	Red Oak Hollow Lathe Works, Wamego
June 25	Skill Enhancement 7:00—9:30 PM	Red Oak Hollow Lathe Works, Wamego
July 7th	Monthly Meeting Tom Shields Sharpening	Golden Prairie Honey Farms 8859 Green Valley Drive, Suite #4, Manhattan

Unless announced, meeting are held at 8859 Green Valley Drive, Suite #4, Manhattan KS
 Meetings start at 9:00 am but come any time after 8:00 am.

Enter at the rear of the building



The American Association of Woodturners (AAW) is a nonprofit 501 (c)(3) organization, dedicated to advancing the art and craft of woodturning worldwide by providing opportunities for education, information, and organization to those interested in turning wood. Established in 1986, AAW currently has more than 15,000 members and a network of more than 350 local chapters globally representing professionals, amateurs, gallery owners, collectors and wood / tool suppliers.

