



Flint Hills

WOODTURNERS

February 2025

In this newsletter:

- February Club Event ... 2
- 2025 FHW Dues ... 3
- Hollow Ball with Glued Finials*... 4
- AAW Bulletin ... 8
- Ya Gotta Eat ... 12
- Wig Stand Initiative... 13
- Meeting Location Map ... 14
- Mentoring Opportunities ... 15
- Club Library List ... 16
- FHW on YouTube ... 17
- Club Information ... 18



February Club Event
Finials
with Tom Shields

Saturday, February 4, 2025
Rock Creek High School, 9355 Flush Rd, St George (Flush), KS 66535
8:30 AM Social Time, 9:00 AM Meeting Opens



2025 FHW Dues

2025 FHW membership dues are due!

- Cost of 2025 FHW membership is \$40
- Please submit dues to treasurer Ross Hirst at our meeting on February 1, 2025
 - Cash, check, or PayPal payable to Flint Hills Woodturners
 - Please include your name and "2025 dues" on the check or PayPal memo line
 - Email Treasurer Ross Hirst for more information or to make arrangements: ross.i.hirst@cox.net

Dues must be received in February in order to receive the March FHW Newsletter.

Hollow ball with glued finials

by Michael Gibson

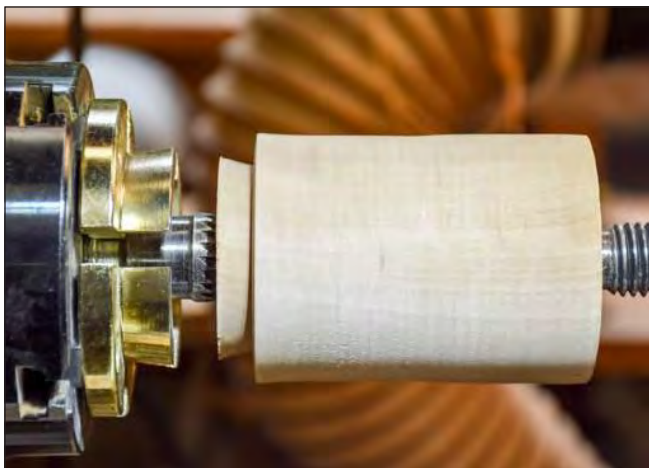
Making a holiday ornament is a good way to use up those odd blocks lying around from other projects. Hollow-ball ornaments with glued-on top and bottom finials are fairly simple and quick to make, once you have made a few.

For this project I selected a block of Bradford pear approximately 2-1/2" x 3-1/2" (6x9cm) to make an ornament around 2-1/4" (5.5cm) diameter. The wood needs to be dry but the exact size is not important — I have made ornaments anywhere from 1-1/4" to 3" (3-7.5cm) in diameter. Your ornament can be any shape you desire: sphere, donut, teardrop, oval, experiment.

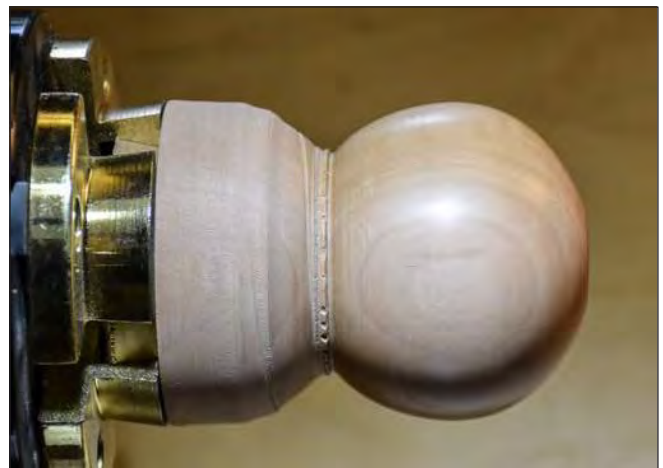
Michael Gibson, of Hoschton, GA, demonstrates and teaches at state and national events.



Gloss finish always looks good on ornaments.



1. Tenon the blank — Turn between centers until the block is round and make a chucking tenon on one end.



2. Rough ball — Use the spindle gouge to shape the sphere, but don't make the neck smaller than the chucking tenon.

PROJECT: Hollow ball & finial



3. Flat — Make a flat spot for the finial, much easier than trying to fit it to the curve of the globe. Cut a dimple to give the drill bit a start.



5. Hollowing tools – A simple steel scraper, top, can handle the hollowing. I like the new carbide-cup tools. After boring the starter hole, use the straight tool to open it up and make room for the bent tools.



4. Bore using a 1/2" (12mm) bit in the tailstock chuck. Slow the speed down, clear the chips frequently, and hold the chuck when withdrawing. Bore through the ball into the tenon, beyond the bottom of the globe.



6. Gauges – As you hollow, check the wall thickness with a thickness caliper or a simple gauge bent from coat-hanger wire.



7. Measure – With the caliper points touching the wood inside and out, the free end shows thickness. Make hardwood about 1/8" (3mm) thick; light-weight woods can be thicker.

8. Wire gauge — With one end bearing on the inside, the free end indicates thickness without scratching the outside.

9. Complete and part– Be sure to stop turning 1/8" (3mm) away from the bored hole. Sand and part off, leaving a flat where the top finial will sit.



PROJECT: Hollow ball & finial



10. Finial size — *The rule of thirds usually will generate a pleasing proportion, so make the bottom finial about twice the height of the ball, and the top finial a third the ball height. I like to start with a blank long enough for both finials.*



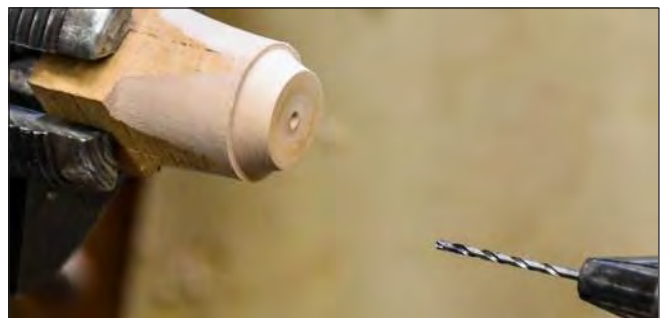
11. Finial blank — *Choose dry, straight-grain, knot-free wood, big enough once it's rounded to cover the flats on the ball. Stick with the rule of thirds to design the finial elements and details. Mark the mounting tenon and major divisions on the wood.*



12. Underhand grip — *Detail the finial with a spindle roughing gouge, 3/8" (10mm) spindle gouge, and a small curved skew, or equivalent carbide tools. With the blank in pin jaws, you can use an underhand grip to steady the thin spindle; if you are a novice, uncomfortable, or do not have the correct chuck jaws, use the tailstock for support.*



13. Tenon — *Measure the hole in the ball and turn a small plug tenon before parting off. There's enough wood left in the chuck for the top finial.*



14. Top finial — *Clean up the face and bore a small hole for a screw eye or hanging string.*



15. Angled edge — *Again keep in mind to follow the rule of thirds when turning the top finial. I like to angle back the edge that is closest to the ball, it seems to make the fit look better.*

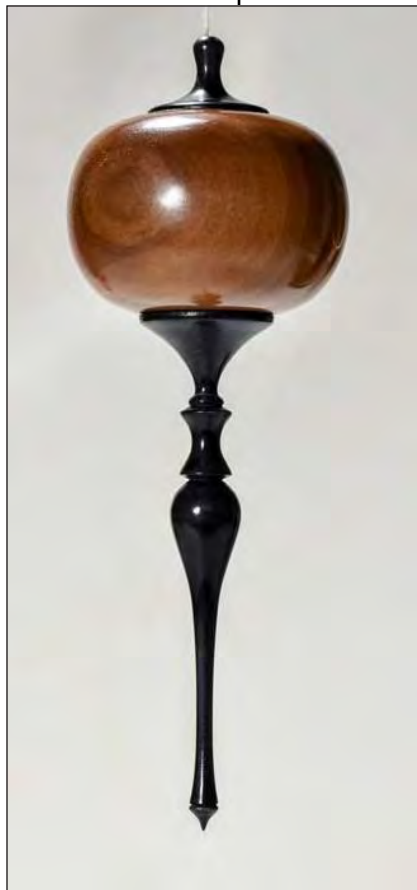
PROJECT: Hollow ball & finial



16. Assembly — *There are many surface treatments you can apply to enhance the globe, including pyrography, paint and dye, or leave it plain. This one is dyed red, with two finials, one colored with black shoe dye, which gives it the look of ebony when finished. For assembly, use epoxy or regular wood glue, not super glue, because if it runs it can ruin your finished work.*



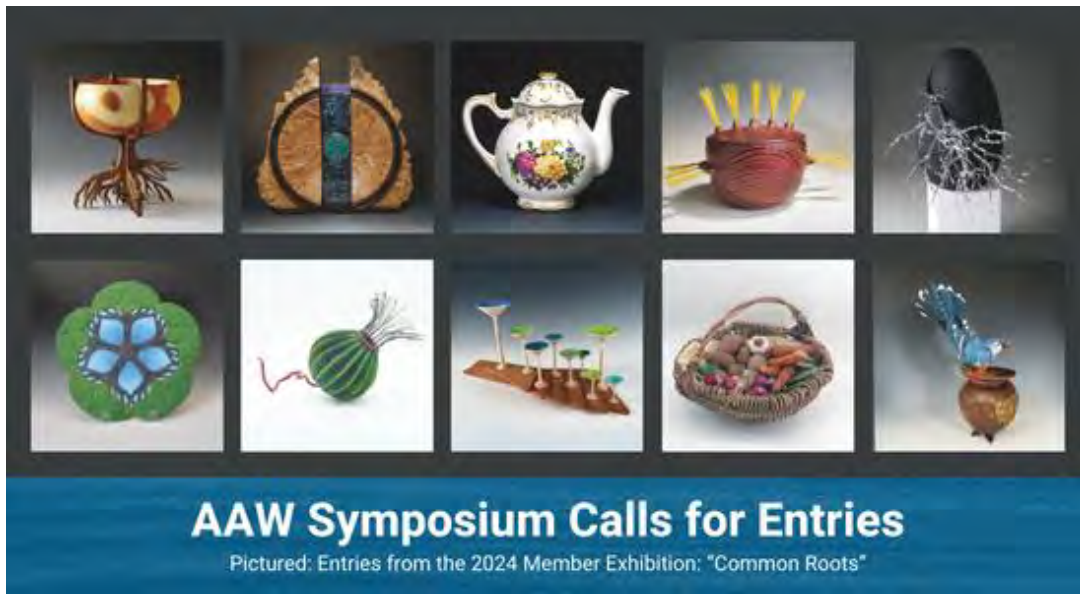
17. Stands — *The stands can be purchased online or you can make your own, using steel wire from the hardware store. My wire came coiled in a tight circle about 6" (15cm) in diameter, so I cut about two-thirds of the circle and bent the hanging loop in one end. For the base, turn a block, bore a hole at an angle the size of the wire and attach. You can alter the height for different length ornaments by gently pulling or pushing.*



"Beginnings"

2025 AAW Member Exhibition

Submission Period: January 1, 2025 to March 15, 2025



The theme for the 2025 AAW member show is "Beginnings". Each year, our goal is to host a Symposium exhibition that showcases and celebrates the full scope of excellent work being created by our members, from skillfully-crafted traditional turnings to innovative sculptures that push the boundaries.

This year's theme also reflects our Symposium host state of Minnesota, home to the headwaters of the Mississippi River. As always, artists are encouraged to interpret the theme for themselves. When you think of a beginning, what comes to mind? Do you already have a piece that reflects the theme perfectly? If it was made between March of 2023 and March of 2025 it is eligible!

Entry fee is \$25 for up to three pieces.

[Click here to learn more](#)

Ways to Save on AAW Symposium Registration



Registration is open for the 2025 AAW International Woodturning Symposium! Join nearly 2,000 other woodturning enthusiasts June 12-15 in Saint Paul, Minnesota at the best rate possible by registering now with these great ways to save:

- **Register by April 11 to get the early bird rate and save up to \$120**
- **AAW Members get an exclusive discount of \$70 off**
- **Request a Chapter Group discount to save \$40**

[Click here to learn more
or register](#)

AAW Forum Highlights



Rick Moreton
Deviled Egg Salt and
Pepper Shakers

Maple



Nino G. Cocchiarella
Salt Box

Walnut
3" x 4", 3" x 3.75"



Anne Ogg
Miniature Antique Spice
Jar



Richard Jackson
Pepper Mill

Rimu, Ake Ake

Want to connect with other woodturners? Sign up for the AAW Forum, a member moderated online community ideal for sharing work, ideas, and obtaining feedback from other woodturning enthusiasts. You can upload photos, converse with other woodturners, and maybe even see your work as a "Turning of the Week."

[Click here to learn more](#)

Don't Forget!

- The AAW member [Remote Demonstration Calendar](#) features online woodturning demonstrations presented by AAW members.
- The AAW WIT (Women in Turning) Committee agrees that to further its mission to increase participation of women in the field of woodturning, it will work with chapters to help grow the number of women in AAW. Currently, women comprise less than 9% of AAW membership. To encourage women to join AAW, the WIT Committee offers a limited number of WIT-sponsored half- and full-price AAW memberships to women for a one-year, full "General" AAW membership. For more information, contact Heather Marusiak at heather.marusiak@gmail.com
- To become an AAW member, or to renew your AAW membership, please visit: [AAW Membership Home](#).

Vista
DRIVE IN

Ya Gotta Eat!

Thursday, Feb. 20 at 12:00 PM

in the back room of

VISTA DRIVE IN

1911 Tuttle Creek Blvd, Manhattan, KS 66502

***Show and Tell
is Welcome!***

...Food!

...Friendship!

...Woodturning!



Open Call for ALL to Participate: WIT Wig Stand Initiative

The AAW Women in Turning is encouraging all chapters to join in a national project to turn wig stands at no expense for the recipients. The wig stands are donated to local partnering organizations that give away free wig stands to those in need. The partners may be hospitals, oncology clinics, cosmetology programs, or other organizations that support people undergoing cancer treatment. The goal is to give back to our community, especially as cancer has likely impacted each of us, our family, or our friends.



Wig stand requirements:

Top: 1 1/2"–2" thick x 5" diameter disk
Base: 1 1/2"–2" thick x 6" diameter disk
Stem: 10"–13" x 1.5 x 1.5 block

- Any species of dry wood will work for this project. It may be solid or glued.
- Stand must be smooth and free of any sharp, jagged edges.
- Stand may be naturally finished or artistically embellished.
- Stand must be finished with POLYURETHANE.
- This is an ongoing project with no deadline for completion.

Please bring completed stands to our WIT Liaison, Heather Marusiak, at any of our monthly FHW meetings.



**Rock Creek High School
Home of the Flint Hills Woodturners
9355 Flush Rd, St George (Flush), KS 66535**

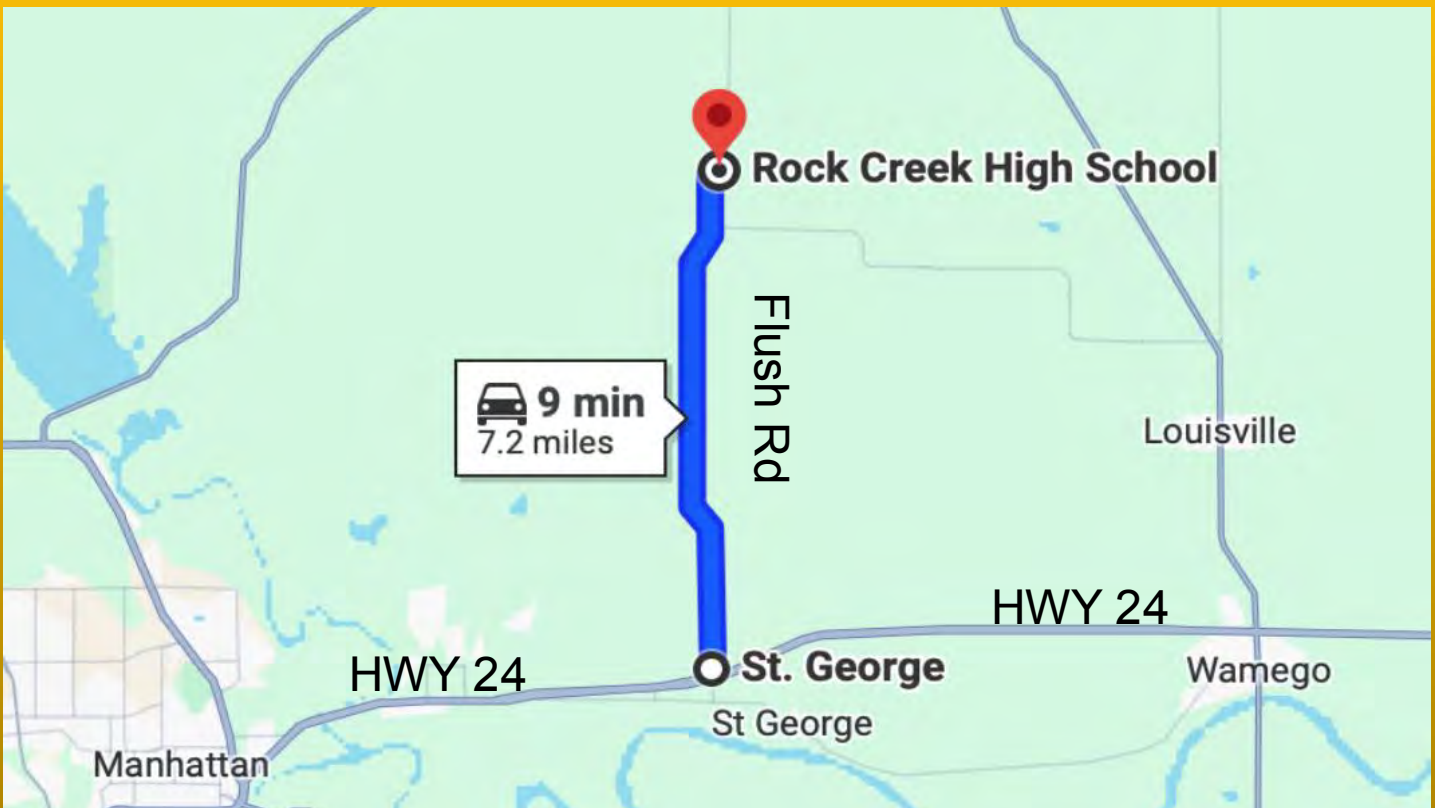
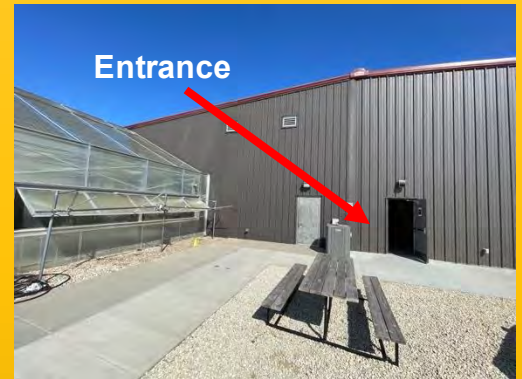
From Manhattan:

Take HWY 24 East toward Wamego to Flush Road. Flush Road is 5.7 miles from the McCall/HWY 24 intersection and is flagged with a speed limit of 60 mph. Go left (North) on Flush Rd for 7.2 miles.

From Wamego:

Take HWY 24 West toward Manhattan to Flush Road. Flush Road is 7.3 miles from the KS-99/HWY 24 intersection and is flagged with a speed limit of 60 mph. Go right (North) on Flush Rd for 7.2 miles.

Please park and enter the building through the door by the greenhouse.





Mentoring Opportunities

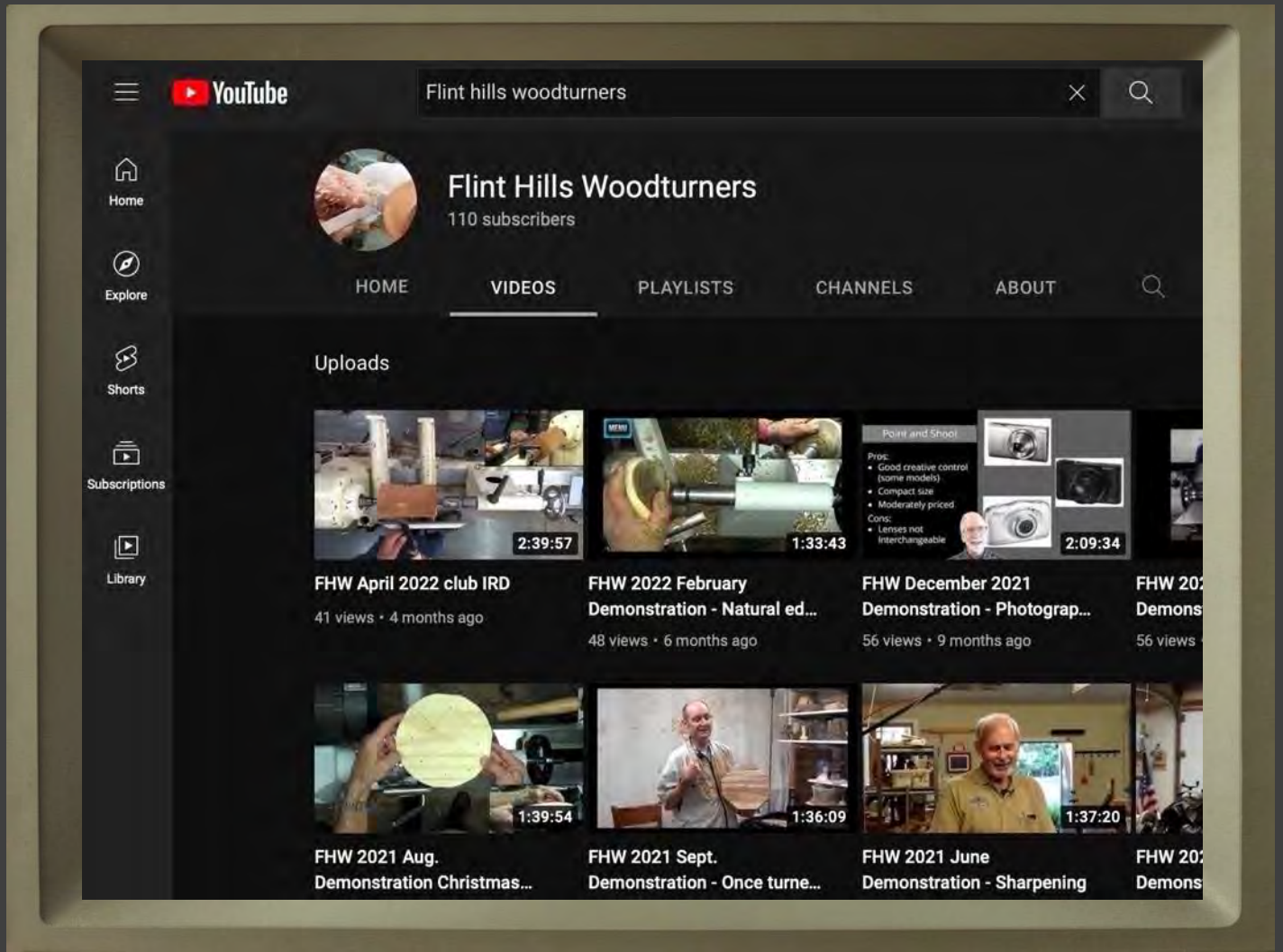
Several of our members have volunteered to be available to those looking to practice, learn new techniques, and improve their woodturning skills. These mentors will lend their time and skill help. Just give one of the mentors listed below a call or e-mail so we can determine how best to help and to set up a time to meet. The club is very interested in this new skill building effort and we are looking forward to hearing from you.

- Steve Bietau, West Manhattan, (785) 317-3179, sabietau@gmail.com
- Tom Shields, Central Manhattan, (785) 341-9969, 5tommyshields@gmail.com
- Dennis Biggs, Abilene, (785) 479-6601, dbiggsgolf@yahoo.com
- Randy Zelenka, West Manhattan, (785) 477-4587, vzalenka@cox.net
- Tom Boley, near Wamego, (785) 456-7890, tboley10@gmail.com
- Ross Hirst (penturning), Topeka, (785) 249-7936, ross.i.hirst@cox.net
- Robert Kloppenborg, Marysville, (785) 713-0658, bjklop@sbcglobal.net

Check out these resources from our club library!

These titles are available for pickup at our monthly gatherings.
Please contact Tod Salfrank (golffntc@gmail.com) for more information.

- | | | | |
|----|---|----|--|
| 1 | Turning Wood with Richard Raffan | 21 | Tips for Turners #3 by David Ellsworth, DVD |
| 2 | Turning Boxes with Richard Raffan | 22 | Turning Wood with Richard Raffan, DVD |
| 3 | Woodturning: A Foundation Course by Keith Rowley | 23 | Turning Boxes with Richard Raffan, DVD |
| 4 | Turning Projects by Richard Raffan | 24 | Turning Bowls with Richard Raffan, DVD |
| 5 | Turning Wood with Richard Raffan | 25 | The Art of Turned Bowls by Richard Raffan |
| 6 | Getting Started in Woodturning, from AAW | 26 | The Art of Segmented Turning by Malcolm Tibbetts |
| 7 | Understanding Wood Finishing by Bob Flexner | 27 | The Art of Segmented Turning by Malcolm Tibbetts |
| 8 | Turning Wood with Richard Raffan | 28 | Bandsaw Handbook by Mark Duginske |
| 9 | Turning for Food by Nick Cook, DVD | 29 | Create the Perfect Wood Finish by Joe L' Erario |
| 10 | Elegant Finials by Cindy Drozda, DVD | 30 | Lathe Fundamentals by Rick Peters |
| 11 | Turning It Up Vol. 1 with Jimmy Clewes, DVD | 31 | Woodturning Today from AAW |
| 12 | Turning it up Vol. 2 with Jimmy Clewes, DVD | 32 | Woodturning Tips and Techniques by Carol Rix |
| 13 | Turning it up Vol. 3 with Jimmy Clewes, DVD | 33 | Woodturning Techniques by Woodturning Magazine |
| 14 | Turn it on Vol. 1 with Jimmy Clewes, DVD | 34 | Creative Woodturning by Dale Nish |
| 15 | Turn it on Vol. 2 with Jimmy Clewes, DVD | 35 | Turned Chessmen by Mike Darlow |
| 16 | Turn it on Vol. 3 with Jimmy Clewes, DVD | 36 | A Sourcebook of Shapes by John Hunnex |
| 17 | The Art of Hosaluk in Woodturning by Michael Hosaluk, DVD | 37 | Foolproof Wood Finishing by Teri Masachi |
| 18 | Turn Around with Jimmy Clewes, DVD | 38 | The Skew by Alan Lacer, DVD |
| 19 | Back to Basics with Jimmy Clewes, DVD | 39 | Shopmade Woodturning Tools by Alan Lacer, DVD |
| 20 | Bowl Turning by John Jordan, DVD | | |



We're on  YouTube

[Click here to view demonstrations hosted by the Flint Hills Woodturners](#)





2025 Board Members



President
Tom Shields



Vice President
Tod Salfrank



Secretary
Barbara Drolet



Treasurer
Ross Hirst



Operations
Steve Bietau



Program Director
Tom Boley



**AAW & WIT Liaison,
Newsletter Editor**
Heather Marusiak

Flint Hills Woodturners is a 501(c)(3) non-profit composed of individuals who are interested in learning and promoting the art of turning wood. Formed in March 2015 for hobbyists in the Flint Hills region of Northeast Kansas, the club welcomes all interested people to visit our meetings to get a sample of this inspiring hobby. You will find warm people from novice to expert willing to share with you. Flint Hills Woodturners is a chapter of the American Association of Woodturners.

If you would like more information about our club, please visit our website:
<https://flinthillswoodturners.org>



The American Association of Woodturners (AAW) is a nonprofit 501(c)(3) organization, dedicated to advancing the art and craft of woodturning worldwide by providing opportunities for education, information, and organization to those interested in turning wood. Established in 1986, AAW currently has more than 15,000 members and a network of more than 350 local chapters globally representing professionals, amateurs, gallery owners, collectors and wood/tool suppliers.